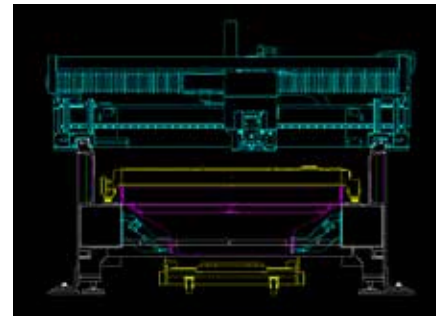


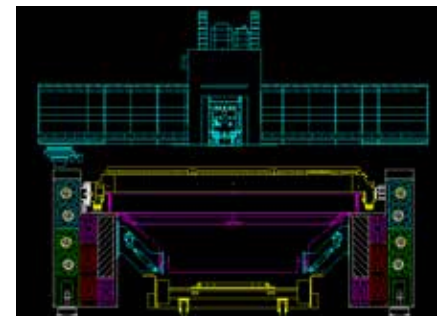
PS3015 fiber

The new generation of fiber laser machines has arrived with the PS3015 laser cutting system. It features a brand new high performance compact design. The PS3015 comes with a high stiffness main frame with a steel cutting bridge that supports a lightweight cutting carriage. A Thermo-hygrostat is used to save space and simplify the assembly of surrounding units. Torque displacement has been decreased by 10x compared to the previous FS3015 Fiber model. The cutting carriage has a weight reduction of 50% compared to other models in the market. HK has developed a reliable machine with advanced technology and specifications to meet any customer needs.

• Innovative design for the main frame

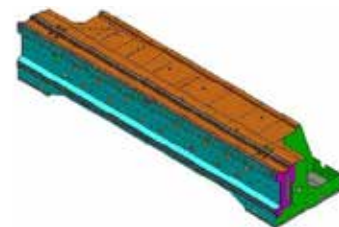


Conventional Frame

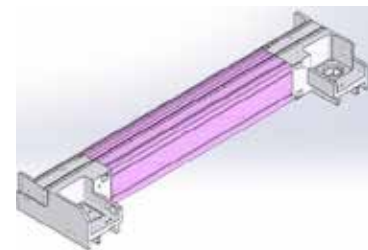


PS3015

• Ultra Light-weight gantry structure



Model: PS-fiber
Structure: Patent engineering
Weight : 386 lbs
Distortion: 0.0004"



Model: Conventional model
Structure: Al base structure
Weight : 560 lbs
Distortion : 0.008"

• Lower Tool Center Point

Light-weight cutting head assembly (Total weight 130 lbs) is designed for high dynamic movement, lowering the Tool Center Point to keep the cutting head from losing accuracy that is caused by whipping or drifting during high speed accel/decell movement.

Ultra Dynamic Fiber Laser Cutting System



High speed fiber cutting head

- Built-in motorized collimator adjusts the focal point
- Two protective windows protect the upper collimator and lower focus lens from any contamination from outside
- Four(4) LED lights at the cutting head indicate the status of the optics and temperature of the head to prevent catastrophic failure
- Sealed structure designed for durable and reliable operation against contamination and environmental issues



Single-emitter based Fiber laser resonator

Solid state Fiber laser resonator adapts the high-power single emitter diodes. This technology certifies a stable, superior beam quality with a long life cycle compared to multi-stack diode or disk laser resonators.



Optimized Base Frame

- Very stiff and stable base frame
- Eight(8) zone & ducted exhaust system
- Dual synchronized twin servo motor drive system
- Helical rack & slant pinion drive system enables very smooth movements



High speed 15" Siemens 840D control & Drive

Stand-type operator control console with 15" touch panel screen. Powered by Siemens 840D SINUMERIK control & drive, it enables unbeatable high speed processing with 40GB hard disk and 2GB memory size.

Its intuitive MMI screen with built-in tech database make it easy for the operator to learn and run

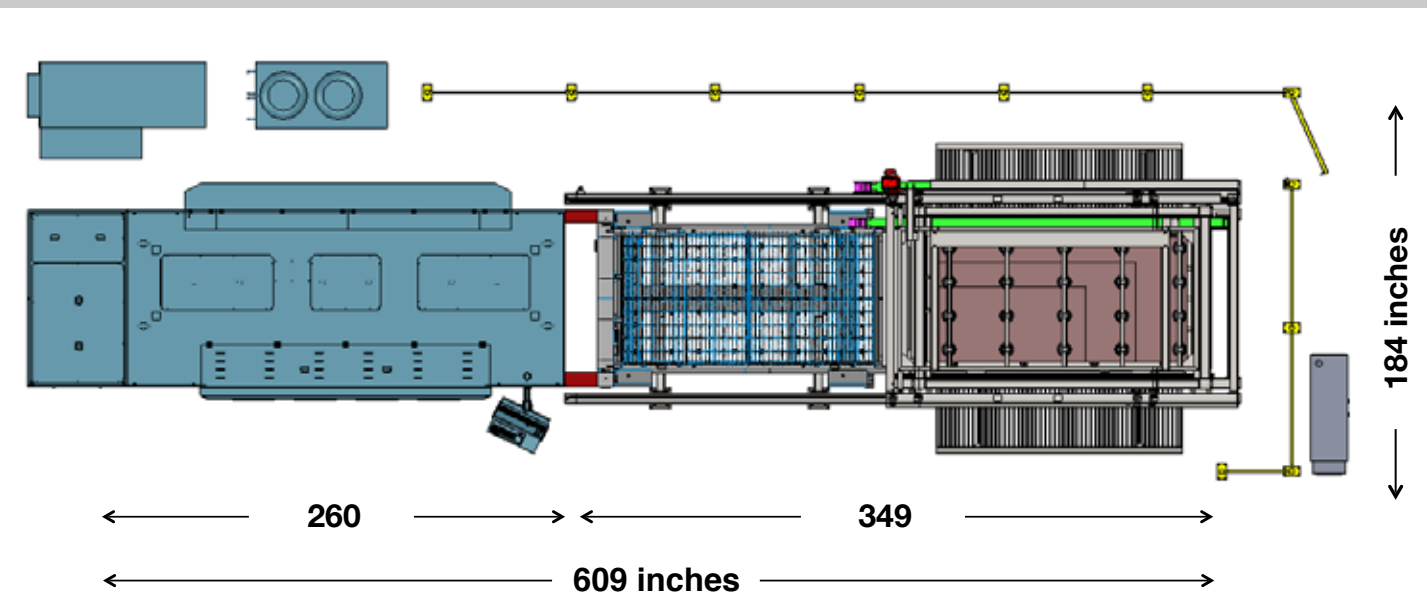
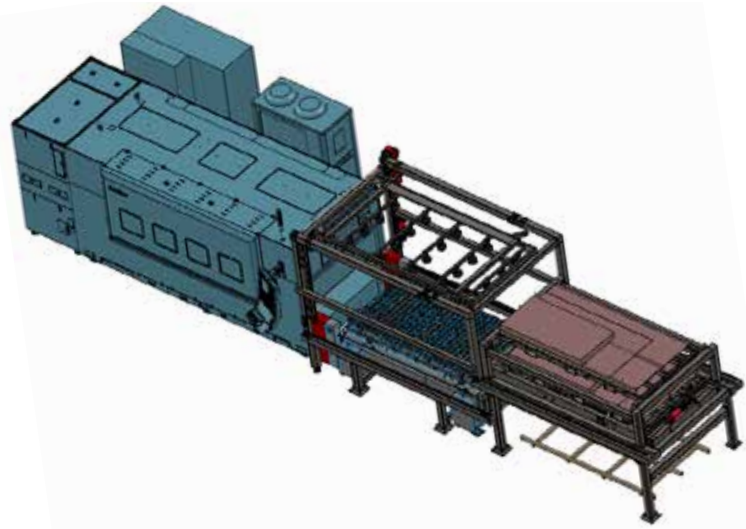


Smart Cell II Automation

Advanced compact material handling system with short cycle time

Items	Specifications
Max. Sheet Size	5' x 10'
Max. Weight	6,614 lbs
Max. Height	4.73 inches
Cycle time	60 seconds
Loading Method	Vacuum Suction
Unloading	Fork
Dimensions	315 x 103 x 110 inches
Loading Pallet	2
Unloading Station	1

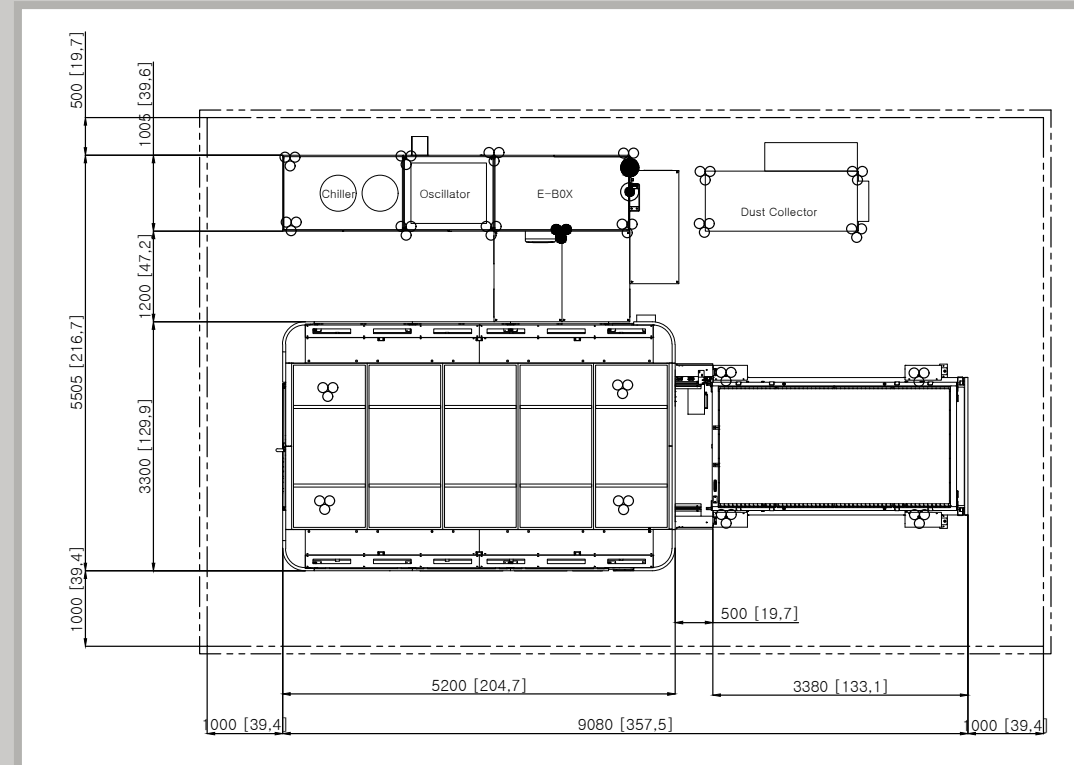
- 1) Fork system is attached underneath the raw material pallet to move in unison to the machine shuttle table
- 2) Fork system picks up the processed sheet while the loader picks up the raw material above
- 3) Pallet/Fork Carrier returns to the home position.
- 4) Loader moves down and loads the raw material to the table
- 5) Fork unloads the processed sheet to the unloading station on the ground.



SPECIFICATIONS

Items	Specifications
Fiber Laser Power	2Kw, 3Kw, 4Kw, 6Kw
Maximum Capacity	120" x 60"
Maximum Axis Speed	3937 lpm, X And Y
Maximum Spontaneous Axis Speed	5512 lpm
Acceleration	1.2G
Position Accuracy	±0.0039
Repetition Accuracy	±0.01"
Table Change Time	± 30 Seconds
Monitor	15" Flat Touch Panel
Operating System	Windows 7
Data Communication	USB, Ethernet LAN

* Specifications are subject to change without notice.



PS3015 FIBER

HK Laser & Systems
Fiber Laser Cutting System

